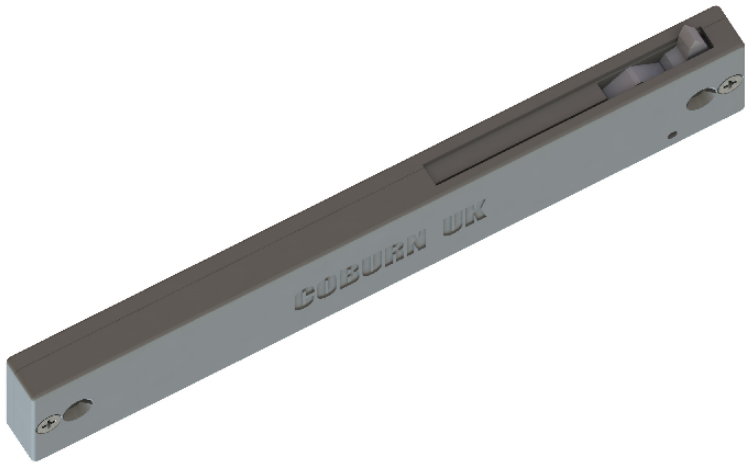
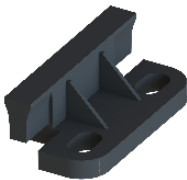


FITTING INSTRUCTIONS FOR JASON 35 - SOFT CLOSER

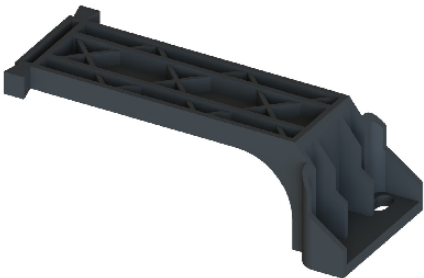
CONTENTS



2X SOFT CLOSER



1X SHORT ACTUATOR



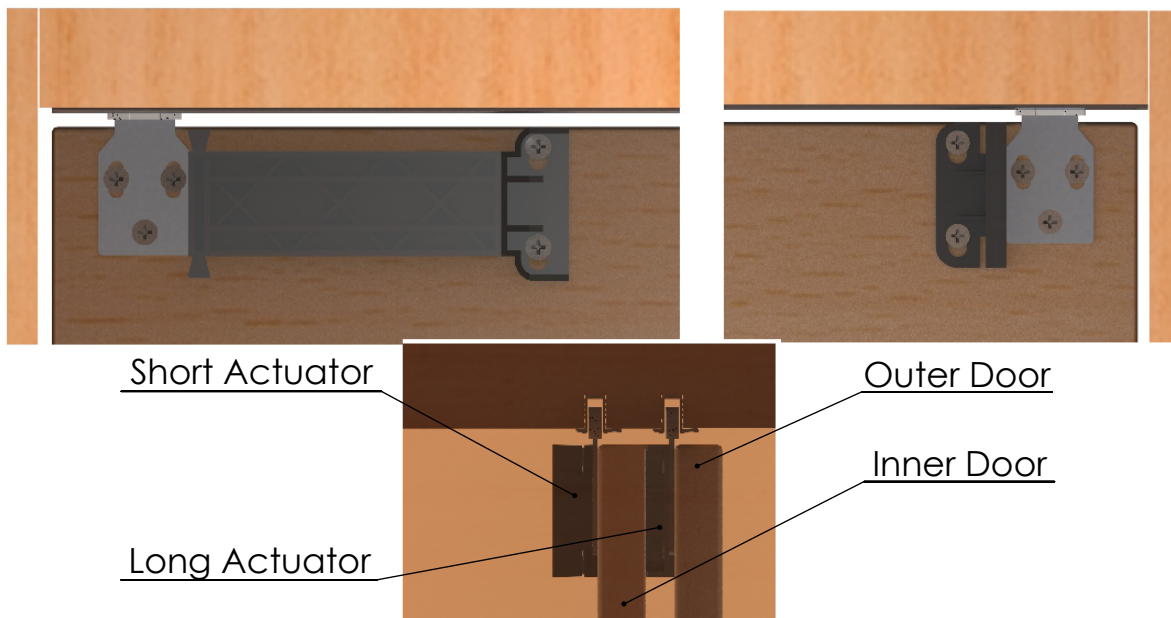
1X LONG ACTUATOR



4x



4x

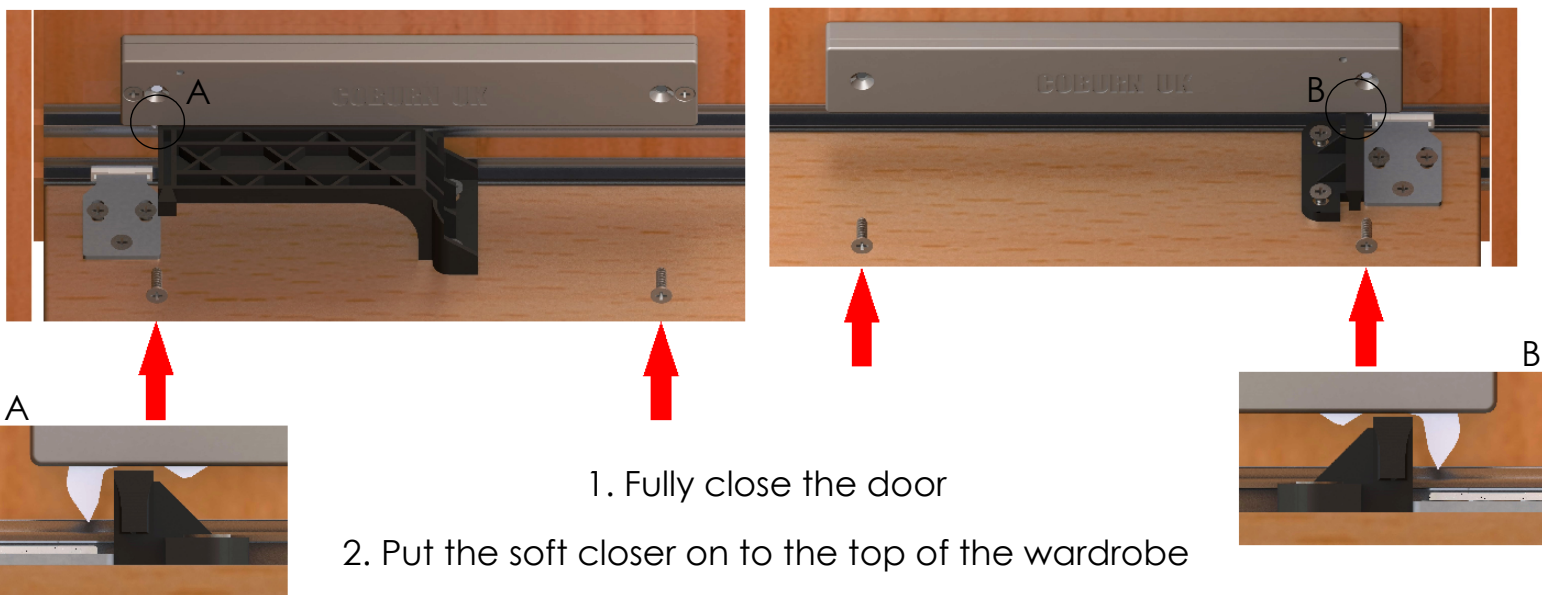


The long actuator **MUST** be installed on the outer door

The short actuator is installed on the inner door and the long actuator is installed on the outer door

The actuators must be flush with the top of the door and to the guides as seen in the picture above

Mark the position of the actuators and fix them with screws supplied



1. Fully close the door

2. Put the soft closer on to the top of the wardrobe

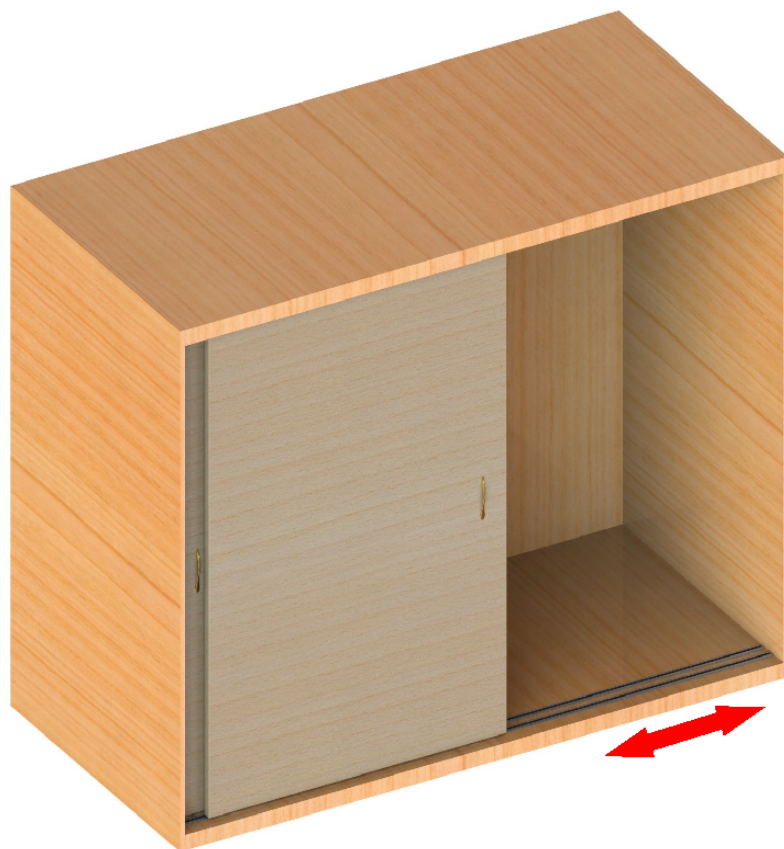
3. Slide soft closer until the actuator is into the trigger

4. Mark the position of the soft closer

5. Open the door and offset the marked line by 1mm to the direction of the door closing in order to give some tolerance

5. Fix the soft closer with screws supplied

Use the above steps for the second soft closer



Open and close the door and ensure that there is enough clearance between the soft closer, the door and the channel

JASON 35 - SOFT CLOSER



Coburn Sliding Systems Limited
Unit 1, Cardinal West, Cardinal Way,
Godmanchester, PE29 2XN, United Kingdom
Phone: +44 (0)20 8545 6680
E-mail: sales@coburn.co.uk
www.coburn.co.uk