

Fab & Fix

Craftsman Window Handle Fitting Instructions

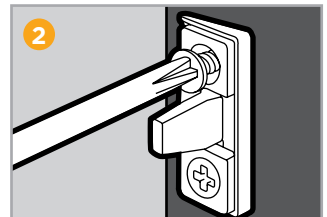
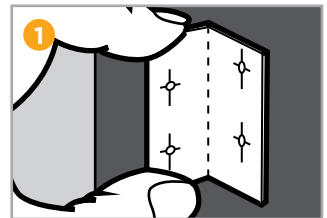
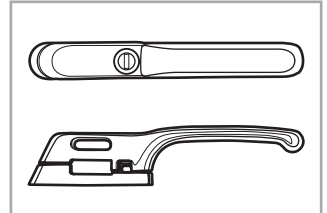
To fit the window handle you will need a crosshead screwdriver & a pencil.

- 1 Remove the old window handle.
The handle will need to be in the open position as the screws are concealed when closed.

NOTE: Fit your Craftsman window handle in a similar position while avoiding existing screw holes.

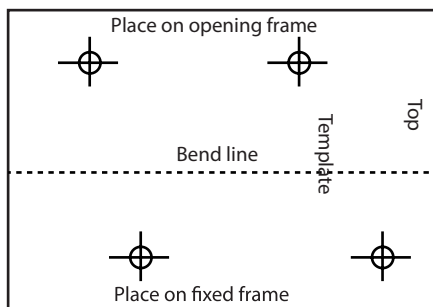
- 2 To correctly align the locking piece on the frame of the window, please use the template below (please read notes below prior to using the template). Mark the positions using a bradawl and then fix with the screws provided.

Depending on your window profile, you have a choice of two locking pieces.



Using the template

If your window hinges on the left of the window as you face it, you will need to use the template how it is stated below. If your window hinge is on the right of the window as you face it, you will need to reverse the template. Pierce the hole centres on the template and ensure the top of the template faces upwards.



**TECHNICAL
HELPLINE**

01922 490 050